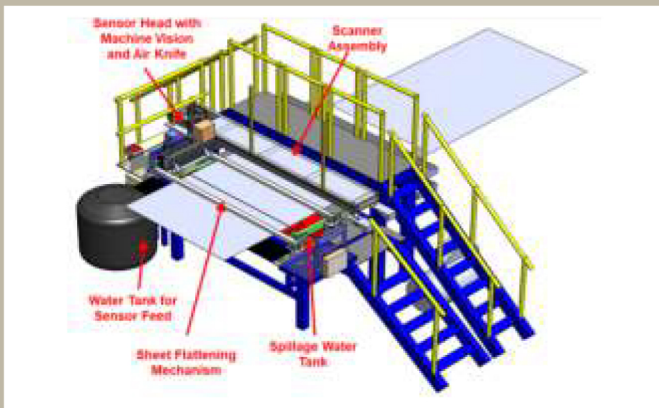
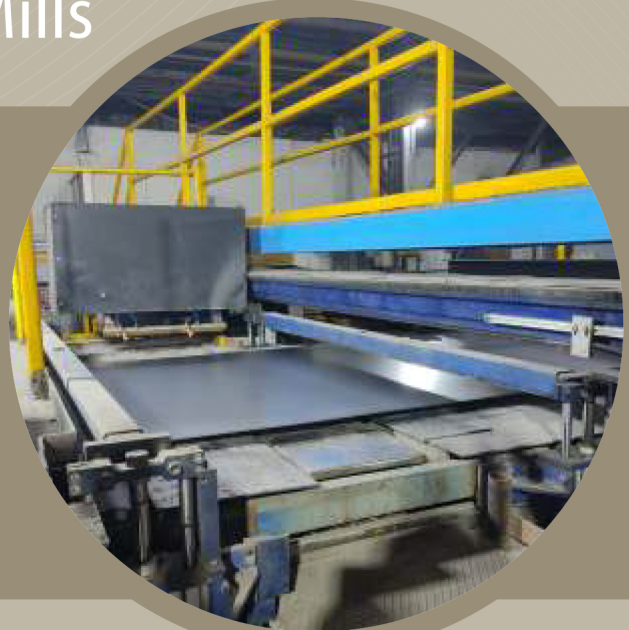


Mash Seam Weld Inspection System for Cold Rolling Mills

WHY IS IT REQUIRED?

- ✓ Cold rolling mills and continuous galvanising lines utilise seam welding of the strip at the entry for maintaining continuous feed to the mill
- ✓ These welds are prone to failure under operating conditions due to physical defects
- ✓ Weld failures lead to forced mill shutdown resulting in significant production loss
- ✓ Weld breakages in line can be averted with an online system to qualitatively assess the weld for defects

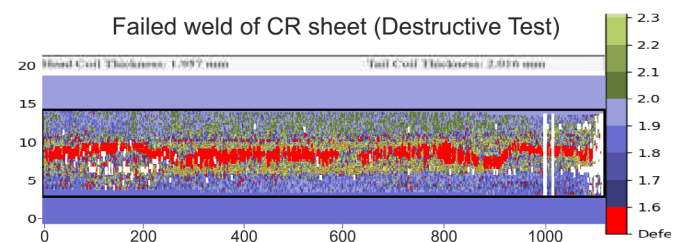


HOW IT WORKS?

- ✓ Specially designed Ultrasonic sensor in a compact scanner system which fits within limited space available in the mill
- ✓ Sophisticated Machine Learning (ML) model that categorises weld quality (Pass/ Fail)

WHAT IT DELIVERS?

- ✓ Online detection of physical weld defects
- ✓ High scanning speed (< 1min)
- ✓ Improving weld reliability by quantitative assessment of weld seam
- ✓ Serves as a tool for optimising welding parameters



Poor Weld Quality of failed sheet as output of the system